

Links with the Centrique Web Site

31st October 2006

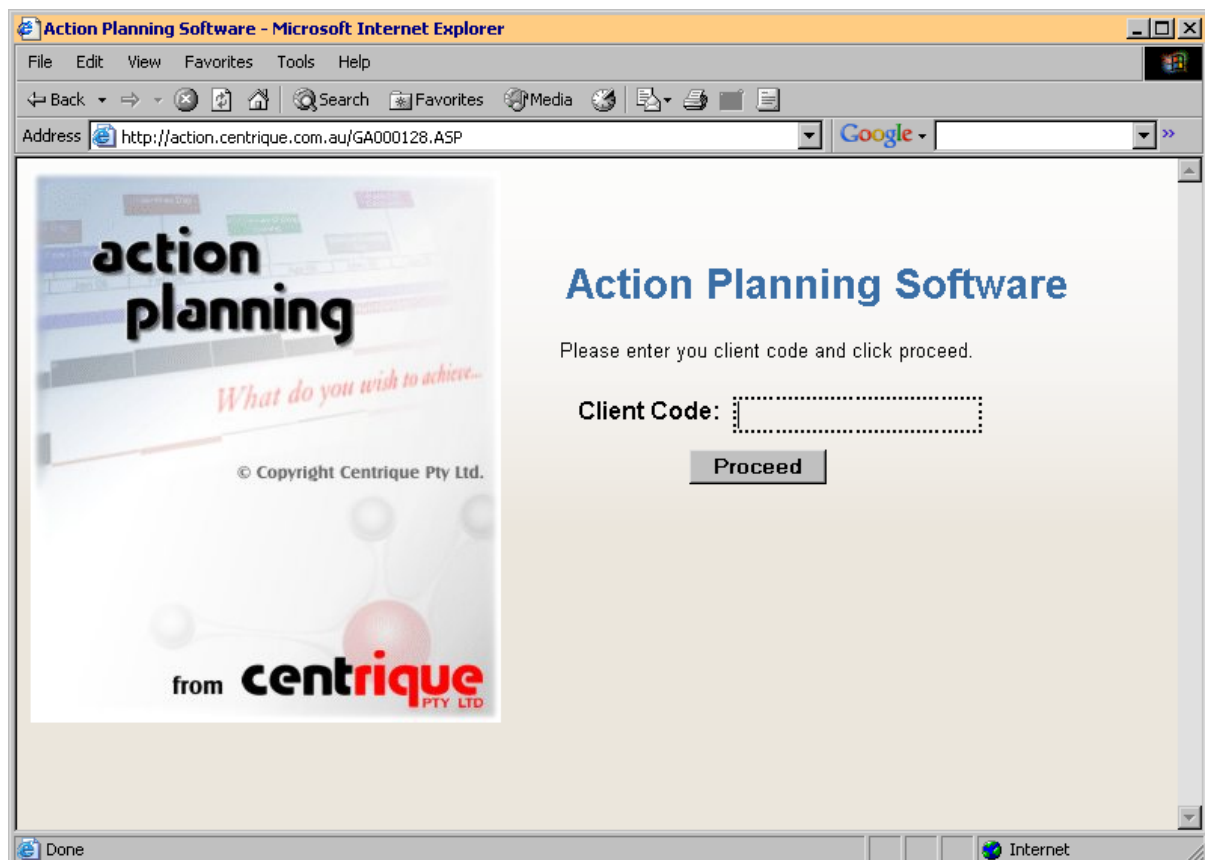
Once a Centrique customer has signed up with a contract for one or more of our services there are several ways in which those services may be more easily accessed. In addition, Centrique would like to encourage the use of our multimedia and other presentation and learning aids. And if appropriate, we would like to link back to our customers' sites and to also publish case studies that may describe the projects that our customers have undertaken with the aid of the Centrique products.

In this paper we describe linkages that are possible and propose certain formats for their use. In the notes that follow we describe the linkages necessary for Action Planning. The same basis applies for all of the Centrique Services. See appendix 'A' for a table of the linkages required for all of the Centrique Services.

For your own access to Action Planning

When your contract is set up in Centrique's internal Service Management System your Name will be identified to it. For the purpose of illustration we have set up a customer with the Client Code 'CUSTNAME'. This is used to gain access to CUSTNAME's work.

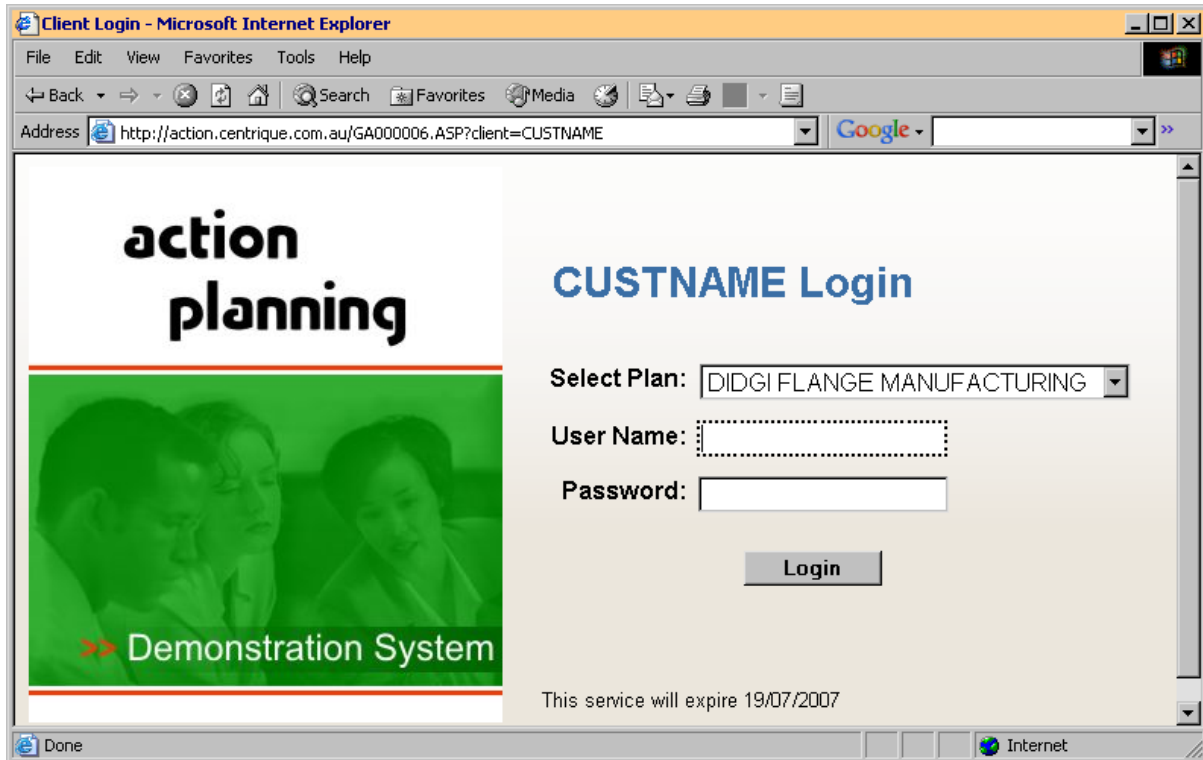
You can use the Centrique web site which has a link to action.centrique.com.au or just use this address in you browser window. It will invoke the Client Code screen:



Then you would enter your client code: CUSTNAME and click on the Proceed button.

Alternatively, in order to make it easy for you to reach your Action Planning services you can simply bookmark this address: action.centrique.com.au?client=CUSTNAME

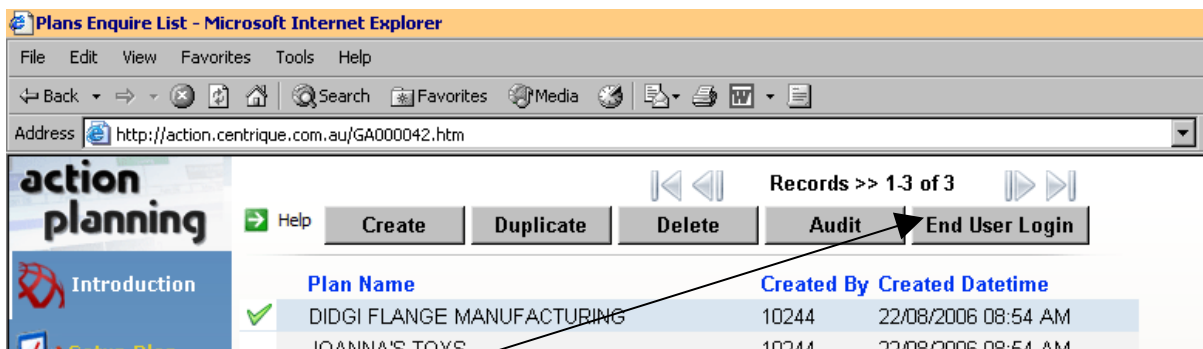
When you use this address it will invoke your Action Planning services window as though you had already typed in the client code 'CUSTNAME':



Initially you can see just the one plan that we have included as a demonstration. Also at the start you may use a login: **user**, and password: **user**. But as soon as you do, please go to the Security function within Action Planning and change the password for this login to some other cryptic value. Perhaps you should set up an alternate login and password to use.

How do you provide for your clients' access?

Click on the Select Plan option in the Introduction menu to see the current plans available and their access attributes:



Here you see the “DIDGI FLANGE MANUFACTURING” plan. Select it and then click on the End User Login button.

When you set up a plan you may see the link that a customer or client may use to access that plan:

Plan No: 37

Plan Name: **DIDGI FLANGE MANUFACTURING**

Link: action.centrique.com.au?plan=37

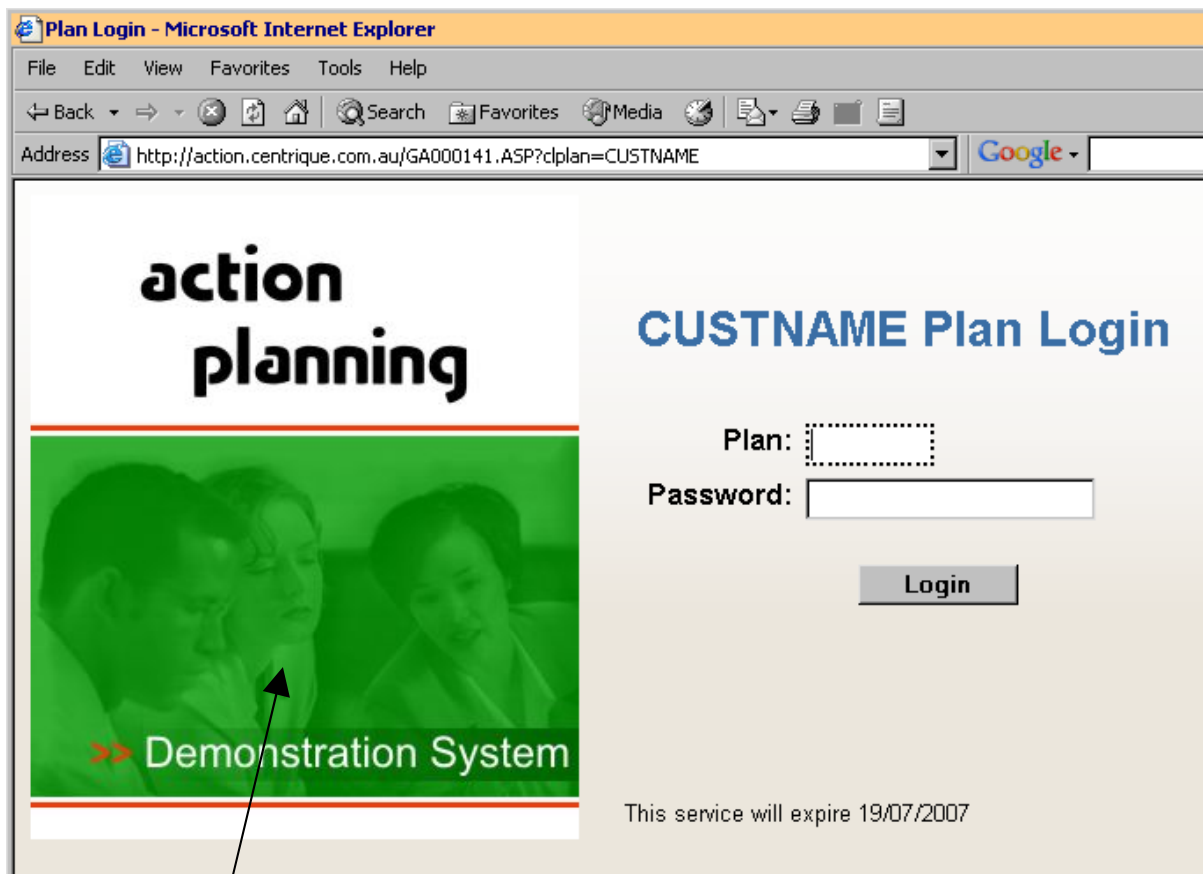
Password:

Confirm Password:

and you may define the password for that access.

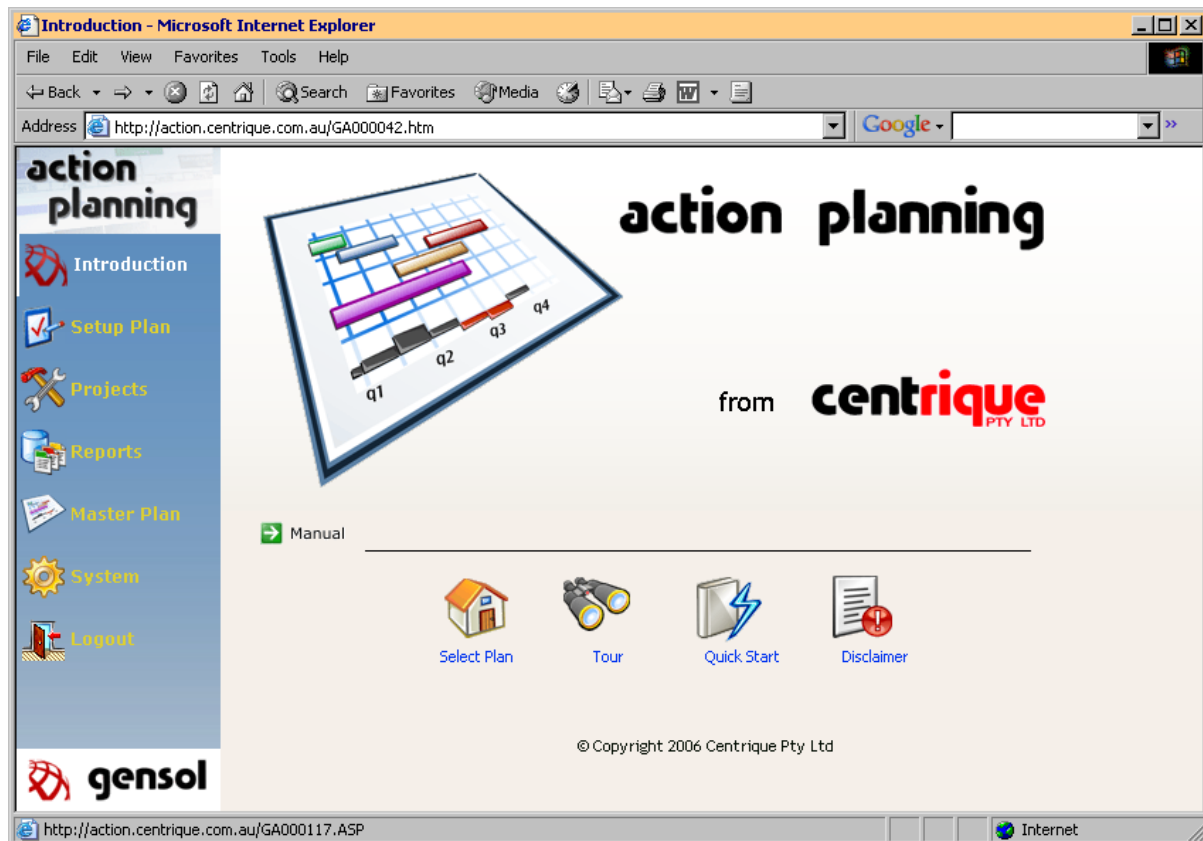
So then if you give your customers or clients the following link which they bookmark or otherwise use:
<http://action.centrique.com.au?clplan=CUSTNAME>

This will invoke the CUSTNAME Plan Login window and they will be able to enter their plan id, which is in this case 37, followed by their password. Both of which items you will also pass on to your customer or client.



If we had the CUSTNAME image, ie your own icon, we could set this picture up for your business so that it looks like your page. This is entirely optional and the first time we carry out this customization is free of charge. This is something which helps your customer or client identify with your value-adding service.

Your customer enters the Plan Number and the Password that you have forwarded to them and the Action Planning menu is invoked:



Multimedia Presentation

The Action Planning multi media presentation which we make available from the Centrique site is an ideal introduction for your customers or clients. If you would like to make a link from your web site to it the address is <http://www.centrique.com.au/multimedia.html> Ideally, if you wish to place this link on your own web site you would describe Action Planning from Centrique very briefly in a panel that includes the link.

Other Presentations and White Papers

We would like to maintain a library of materials that will be of value to you and your customers or clients. However we do not intend to distribute these materials but to manage them on the Centrique site. If you would like to link to these resources please do so.

Centrique would like to refer to its accredited associates and their Case Studies

If you are an accredited associate then we would like to refer to you from within Centrique's own web site. If you can briefly describe your services and contact details we would enter this in a page on our site that lists accredited associates who desire an entry. If you would like to publish a one-page case study that shows how you have used Action Planning, or any of Centrique's services, perhaps we can show this on Centrique's web site, or simply link to your web site to the page concerned.

Your Web Site Content

If you wish to refer in your web site to Action Planning, Financial Impact or any other service that Centrique provides to you, we would ask you to make use of our branding and style guide. This includes images of our logos and the proper naming conventions used. Please ask us for this material if you wish to refer to Centrique and its services.

Appendix 'A' - table of the linkages required for all of the Centrique Services.

These links are illustrated with the client code CUSTNAME. You will be given your own unique client code for each service that would replace CUSTNAME.

Service	Nature of link	The link to use
Action Planning	From Centrique's site	http://action.centrique.com.au
Action Planning	Your link to this service	http://action.centrique.com.au?client=CUSTNAME
Action Planning	Your customers' or clients' link	http://action.centrique.com.au?clplan=CUSTNAME
Financial Impact	From Centrique's site	http://fi.centrique.com.au
Financial Impact	Your link to this service	http://fi.centrique.com.au?client=CUSTNAME
Financial Impact	Your customers' or clients' link	http://fi.centrique.com.au?clplan=CUSTNAME
Activity Management	From Centrique's site	http://activity.centrique.com.au
Activity Management	Your link to this service	http://activity.centrique.com.au?client=CUSTNAME
Activity Management	Your customers' or clients' link	http://activity.centrique.com.au?clplan=CUSTNAME
Capability Profile	From Centrique's site	http://capability.centrique.com.au
Capability Profile	Your link to this service	http://capability.centrique.com.au?client=CUSTNAME
Capability Profile	Your customers' or clients' link	http://capability.centrique.com.au?clplan=CUSTNAME

Other useful links:

Subject	Link to use
Centrique Home Page	http://www.centrique.com.au
Action Planning Multimedia Presentation	http://www.centrique.com.au/multimedia.html